



01235 760793 | info@allistergodfrey.com | www.allistergodfrey.com

Appledown | 31 Garston Lane | Wantage | OXON | OX12 7AR



dwellings

Allister Godfrey Architects

about us

Founded by Allister Godfrey in 2005, Allister Godfrey Architects has built a reputation for the design of bespoke buildings throughout England.

Good client relationships are central to both the philosophy and success of the practice. We wholeheartedly believe that design is a reciprocal process between client and architect, so we listen carefully to our clients to help shape and create the spaces they would like to live in.

We love what we do; whether it is a modest living extension to an urban or country home or a sensitive and exciting re-working of a listed building. All of our projects are approached with the same care and commitment, regardless of size.

contents

Green Willows
Contemporary family house | Cumnor, Oxfordshire

The Cedars
Contemporary family house | Monks Risborough, Buckinghamshire

Chamfer House
Contemporary family house | Upton, South Oxfordshire

The Slates
Contemporary family house | Cumnor, Oxfordshire

dwelling

This book is an introduction to some of the dwellings the practice has designed. Some are replacement homes and some are new houses on brownfield sites.

We define a dwelling as one being under 500 sq. m or approximately 5000 sq. ft.



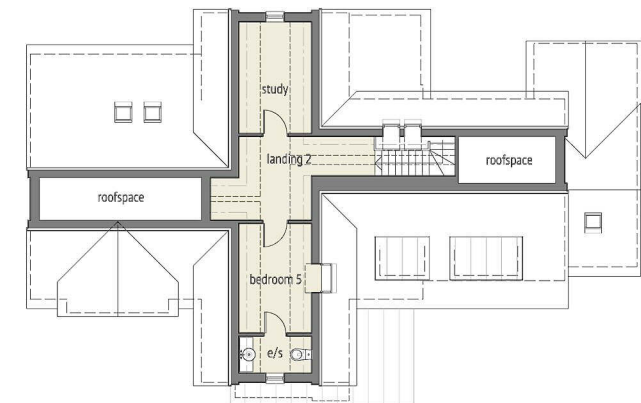
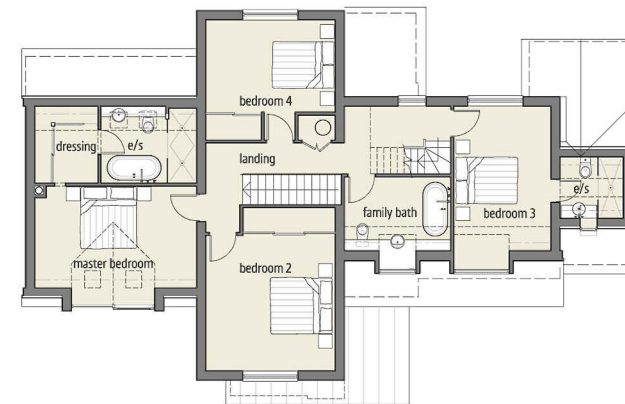
Green Willows

Contemporary family house | Cumnor, Oxfordshire

We were tasked with providing a replacement dwelling for our client and his family. Our brief was to provide a house, contemporary in nature; full of natural light, spacious with an open plan living arrangement. Additional requirements were to provide 5 bedrooms and a study. The plot dictated the constraint of having a south facing frontage and a north facing private garden.

The dwelling exceeds our client's expectations; the house is flooded with natural light due to the dual aspect of the principal living areas. It also responds well to its context through careful planning to ensure neighbours' views and light have not been disrupted. The use of traditional materials in a sharp and contemporary manner help it sit comfortably in its surroundings.

The flow of the space in and around the house has been particularly successful; on arrival at the property a skilfully landscaped parking court draws your eye to the front door. The canopy over the entrance door is deliberately low to heighten the impression of space once you enter the hallway. Immediately your eyes are drawn into the house and the logic of the space is revealed, the staircase leading upstairs, dining to your left and then the promise of more space by the views glimpsed of the private gardens at the rear. Once into the house proper the living area extends both ways. The expanse of space and light are very generous without losing the sense of home.









The Cedars

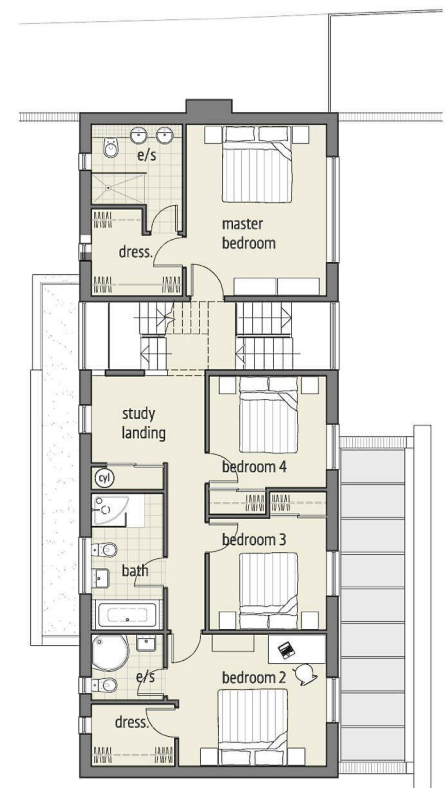
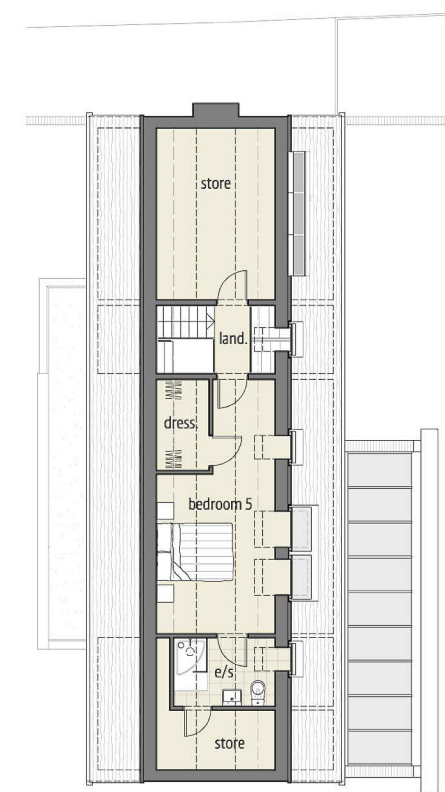
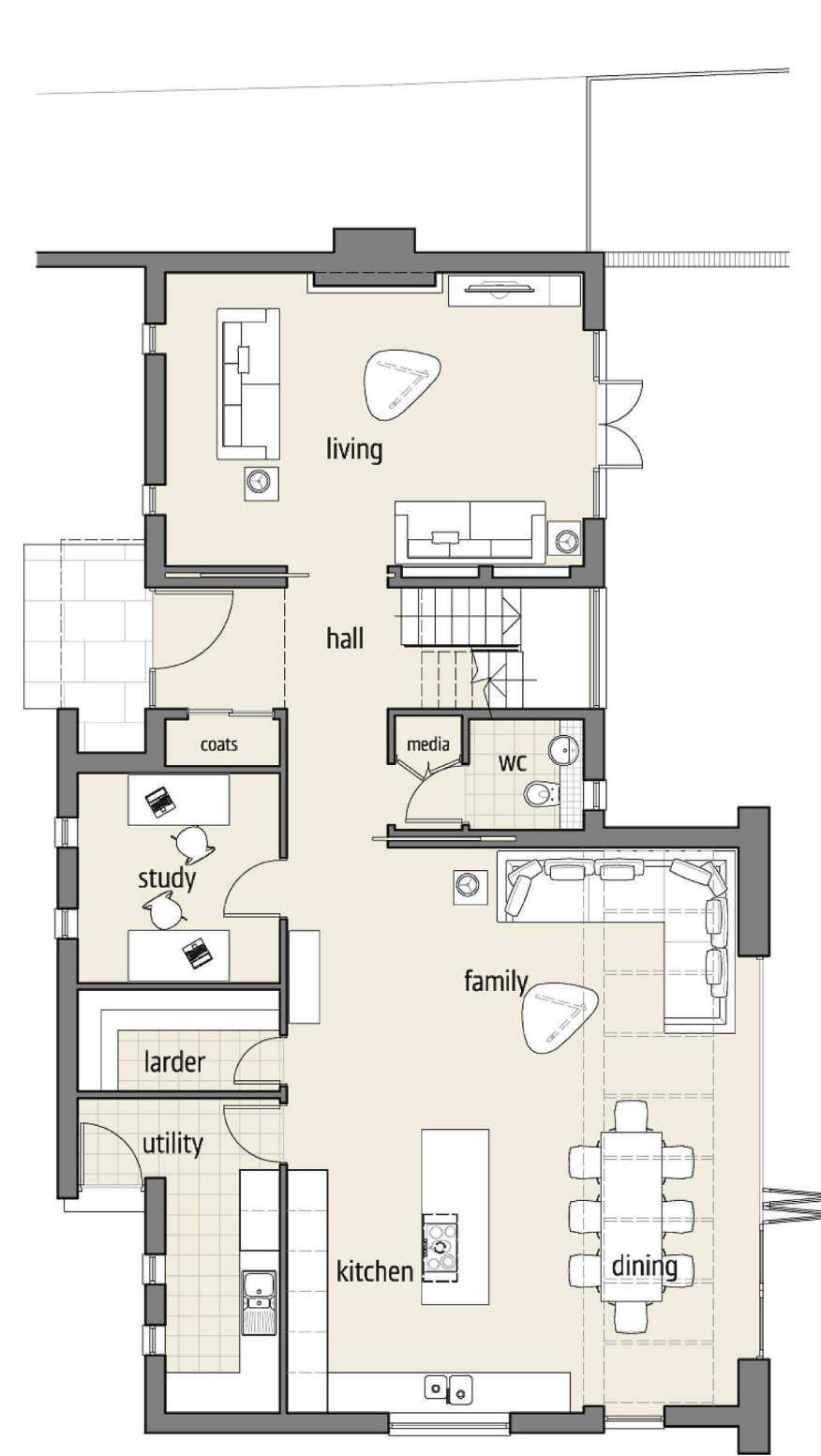
Contemporary family house | Monks Risborough, Buckinghamshire

Our client purchased the land for this site with the benefit of outline planning permission. We were tasked with providing a contemporary styled family home that balanced exciting design with cost effectiveness along with sustainable elements.

Our solution was to design a simple rectangular plan to which we incorporated some ground floor 'extensions' which provided additional floor space. We opted for a barn like aesthetic that happily accorded with guidance outlined in the Chiltern Design Guide; a huge influence on the planning constraints for the site.

Once planning permission was obtained our clients opted to self-manage the project. Work started on site in the summer of 2010 and was complete enough to ensure the family were able to spend Christmas in their new home; due in no small part to the use of a timber framed construction.

[as featured in Self Build and Design magazine]







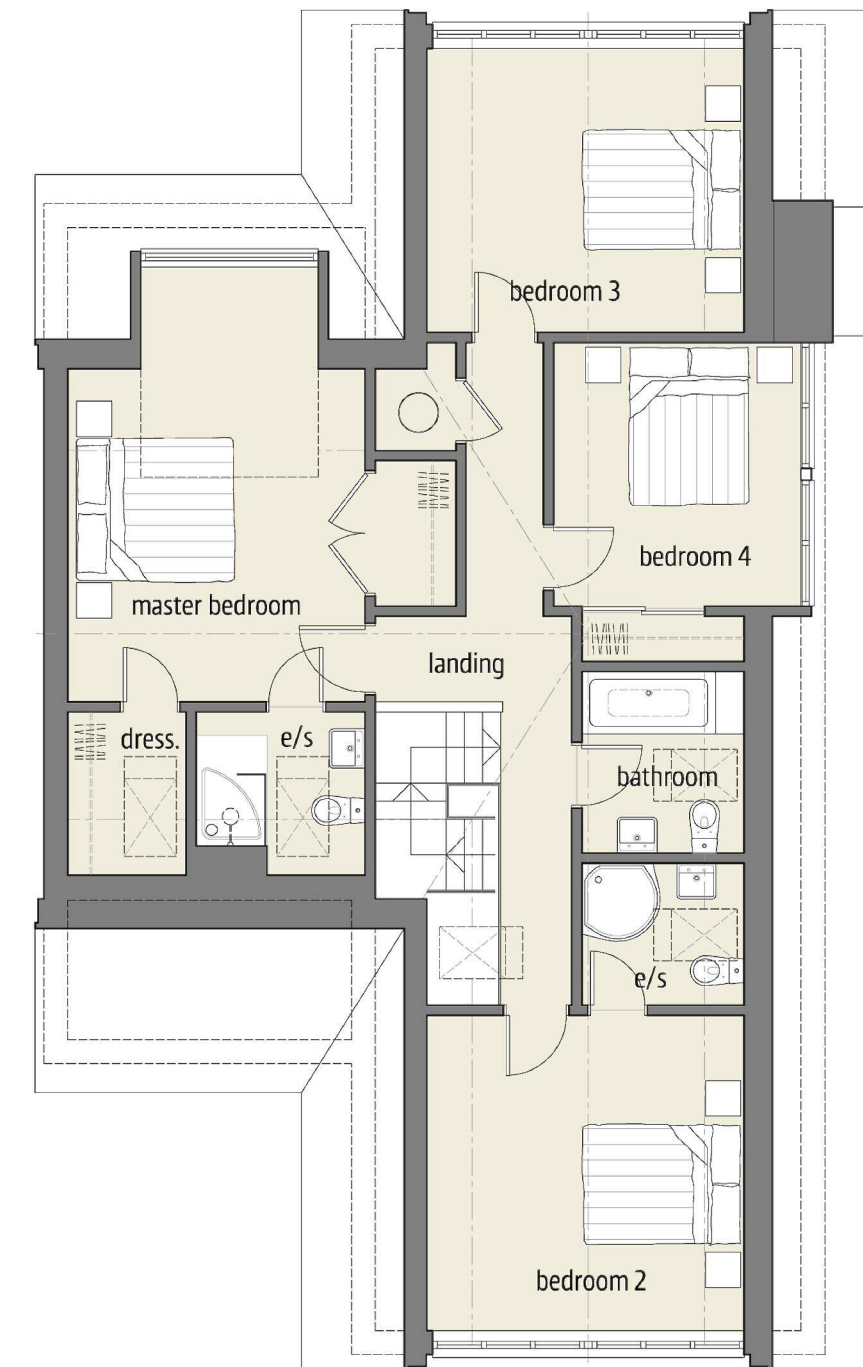
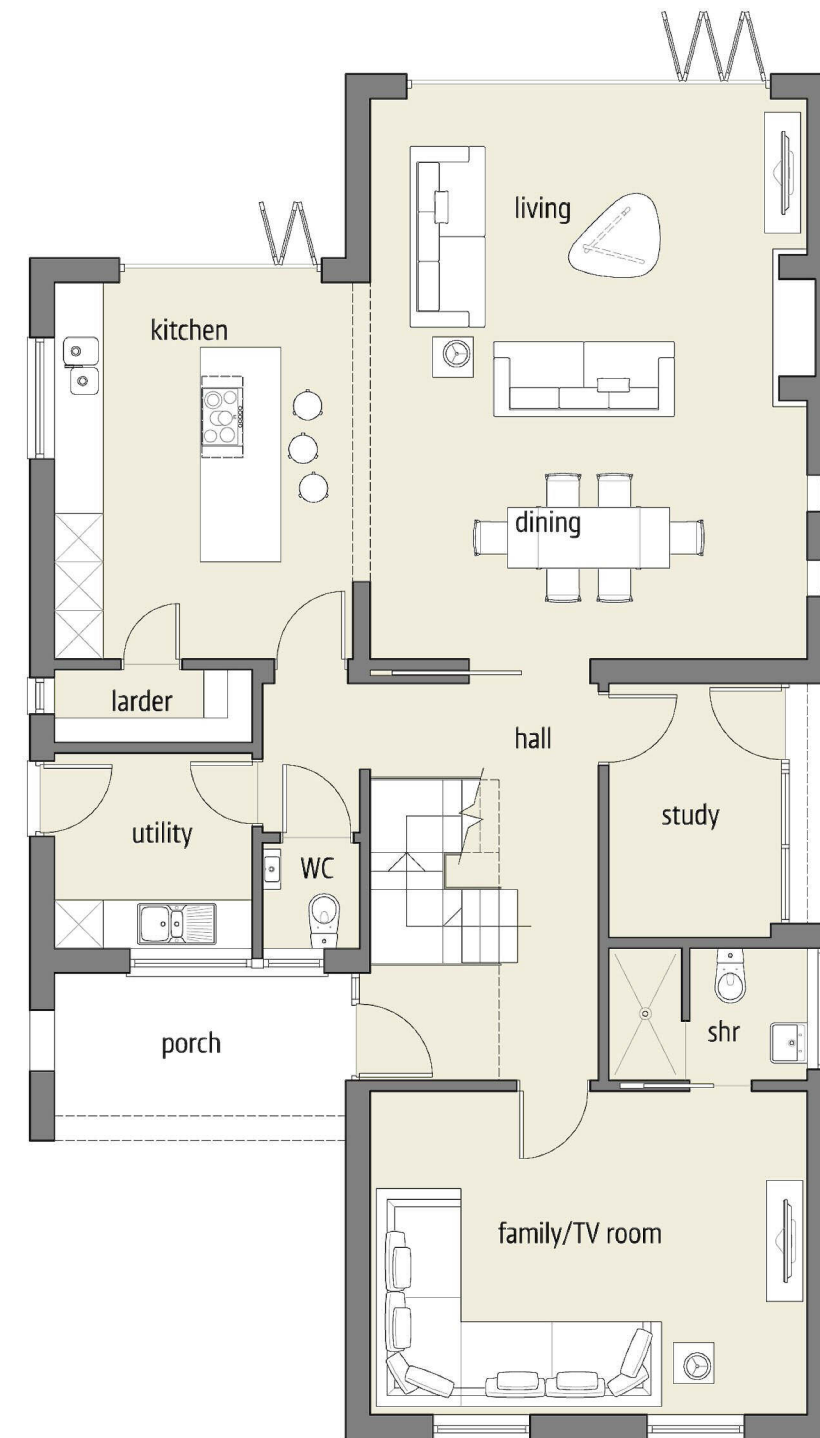
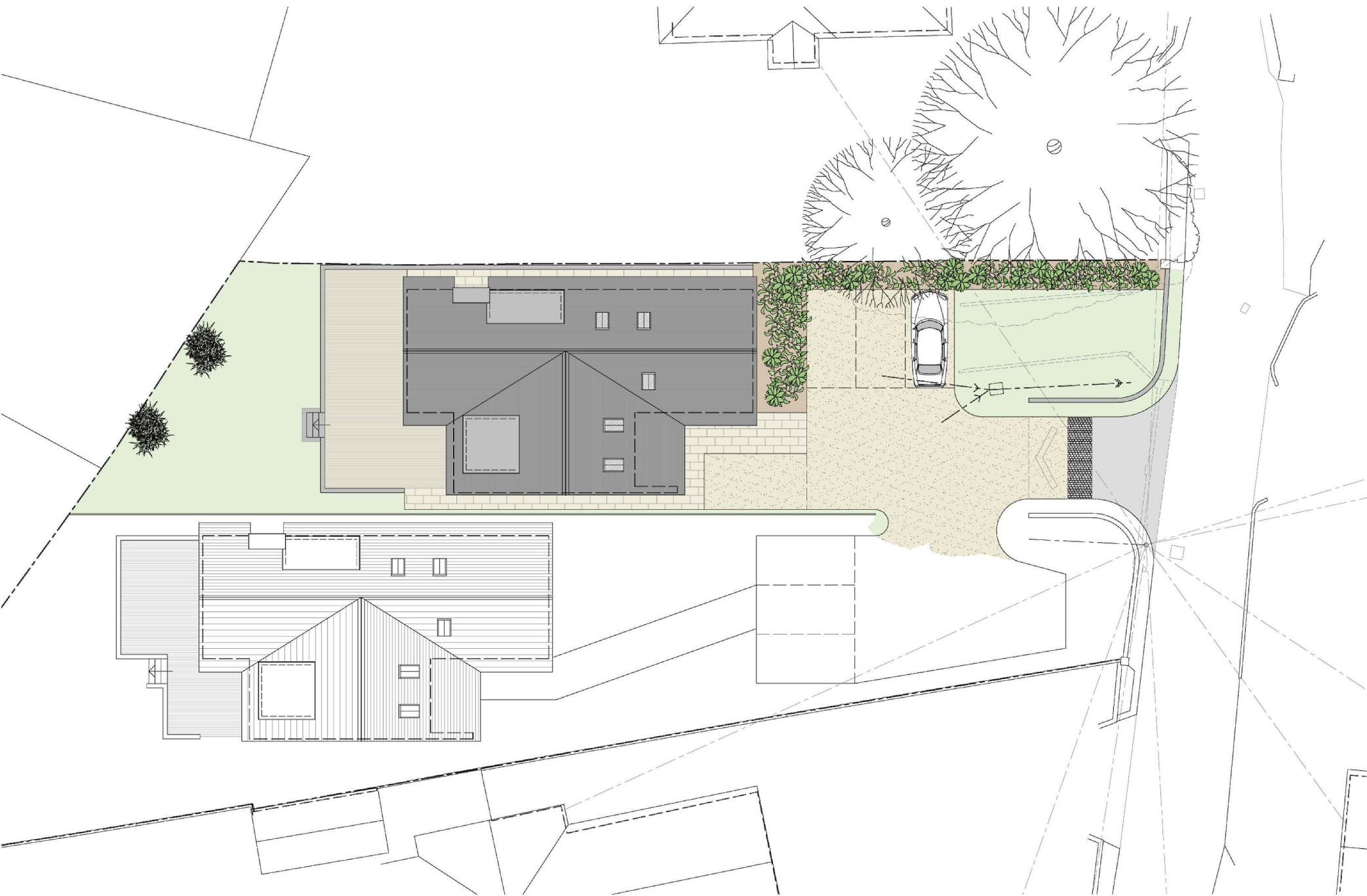


Chamfer House

Contemporary family house | Upton, South Oxfordshire

Our client purchased this site with the benefit of planning permission for two dwellings to replace the existing bungalow. We were asked to review the approved designs to see if a more contemporary aesthetic and layout could be achieved for the houses.

The revisions we made to the plans included making the living areas open plan and redesigning the staircases. This change of layout meant the fourth bedroom was moved to the first floor, gaining a family room in its space. A number of alterations were made to the exterior, these included using a dark grey brick, Cedar boarding and rendered walls to alter the original permission. When presented to the planning officer as a resubmission all changes were well received.







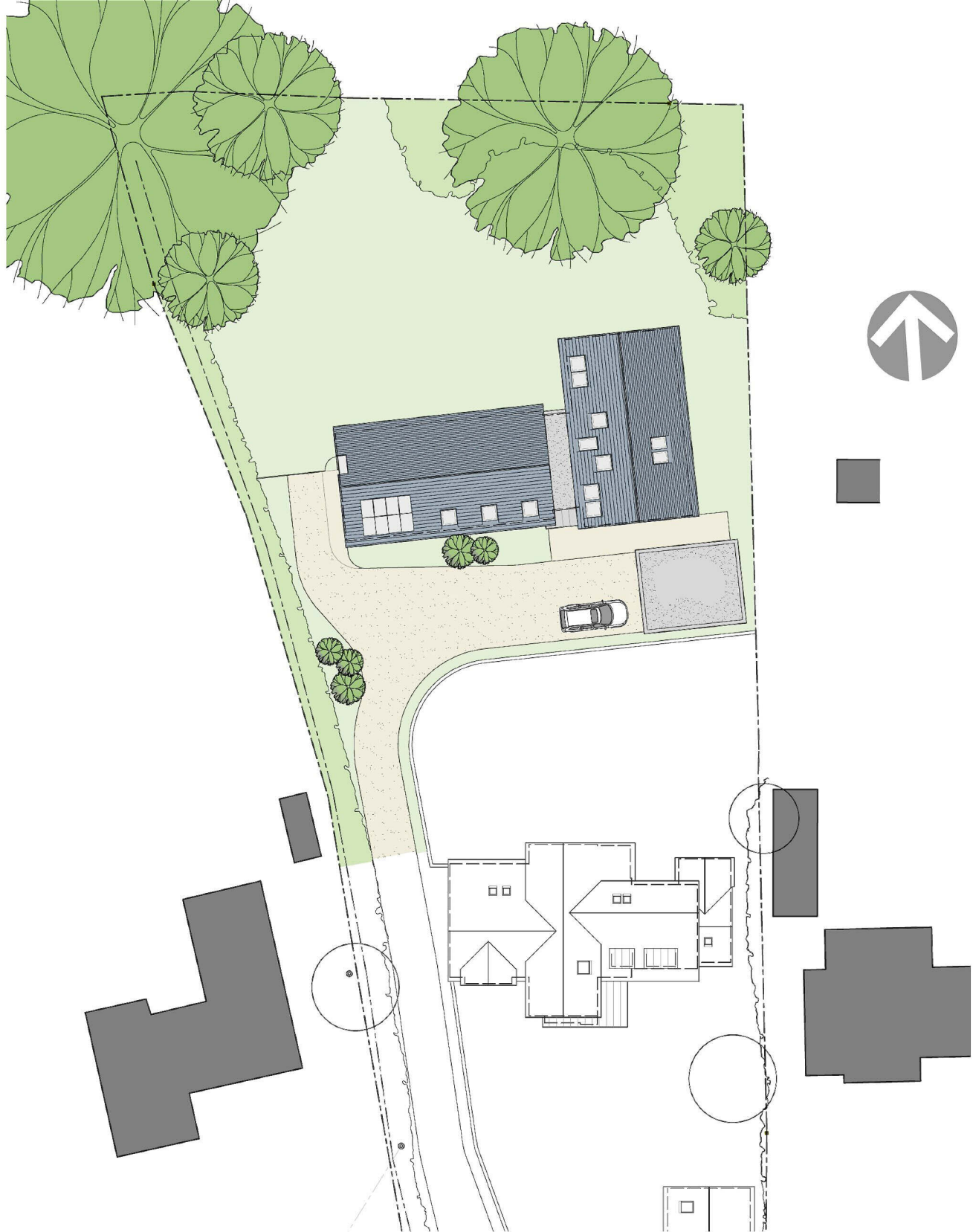
The Slates

Contemporary family house | Cumnor, Oxfordshire

After the successful completion of our first project with this client [Green Willows] we were engaged for this follow-on project.

Our clients were so enthused by the design process of their first house they attended evening courses in architectural appreciation. The new dwelling is very much the result of a collaboration between us and our clients. The house is based on a grey rendered living pavilion and a timber clad sleeping pavilion, both structures are connected with a flat roofed entrance hall.

The Willow tree to the rear of the site is a dominant landscape feature. The house responds to this by having a clear view of it from and through the entrance hall.







some remarks from our clients on working with us ...

[about Green Willows]

Allister listened to what we wanted and then came up with a fantastic solution; we found Allister interested, innovative and creative and are delighted with the end result.

[about The Cedars]

Allister stood out amongst the five architects we invited to tender for our project, not only from his design style which invoked the toned-down modernist style we were looking for but also from his advanced preparation and ability to interpret how we lived on a daily basis and create a home which works for the way our family lives.

From preparatory work even before our first meeting, through detailed use of the local planning design guidelines and local research to achieve our goals in the face of a traditionalist planning officer, Allister's attention to detail, enabled something unique within the market town we now live. Allister listened to our initial ideas for the home, interpreted this bringing his own experience and ideas to the design process, but ultimately was always prepared to listen to what we wanted as a client. The perfect balance of stopping us from doing anything stupid and taking our points of view in the process.



ALLISTER GODFREY RIBA

Director

As director Allister heads up the practice and is the key point of contact for all clients. He ensures that the practice continues to design exciting schemes that result in the fantastic spaces we have built our reputation on.

Allister has a passion for modern design which goes beyond architecture ... be it a light fitting, garlic press or a greetings card.